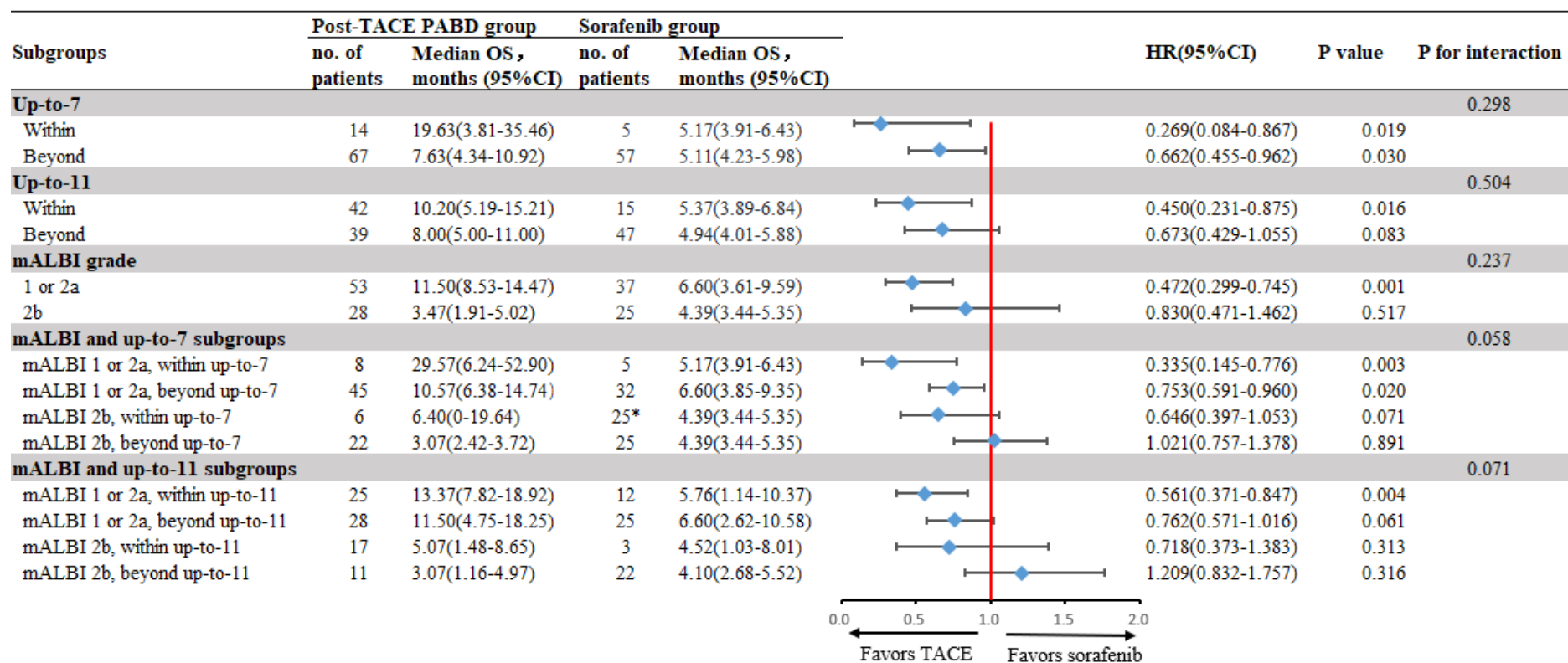


Supplementary material

The supplementary material was provided by the authors and some information may not have been peer reviewed. Any opinions or recommendations discussed are solely those of the author(s) and are not endorsed by the Hong Kong Academy of Medicine and the Hong Kong Medical Association. The Hong Kong Academy of Medicine and the Hong Kong Medical Association disclaim all liability and responsibility arising from any reliance placed on the content.

Supplement to: LM Chen, SCH Yu, L Li, et al. Liver- and tumour-specific indicators predicting suboptimal survival following repeat transarterial chemoembolisation in patients with hepatocellular carcinoma. Hong Kong Med J 2025 Feb;31(1):32-40.
<https://doi.org/10.12809/hkmj2311208>.

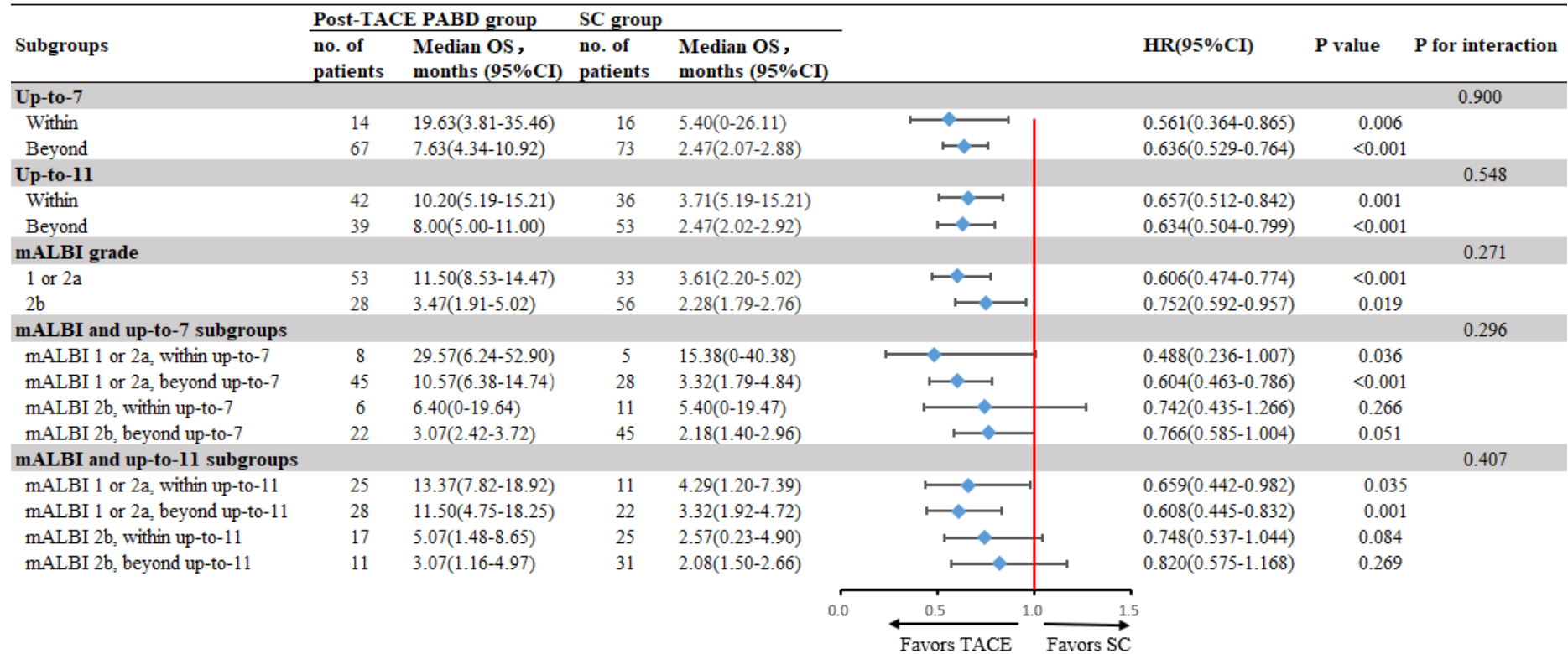
Supplementary Figure 1. Forest plot of subgroup analysis of overall survival for patients with persistent albumin–bilirubin grade deterioration after the initial transarterial chemoembolisation relative to patients receiving sorafenib



Abbreviations: 95% CI = 95% confidence interval; HR = hazard ratio; mALBI grade = modified albumin–bilirubin grade; PABD = persistent albumin–bilirubin grade deterioration; TACE = transarterial chemoembolisation

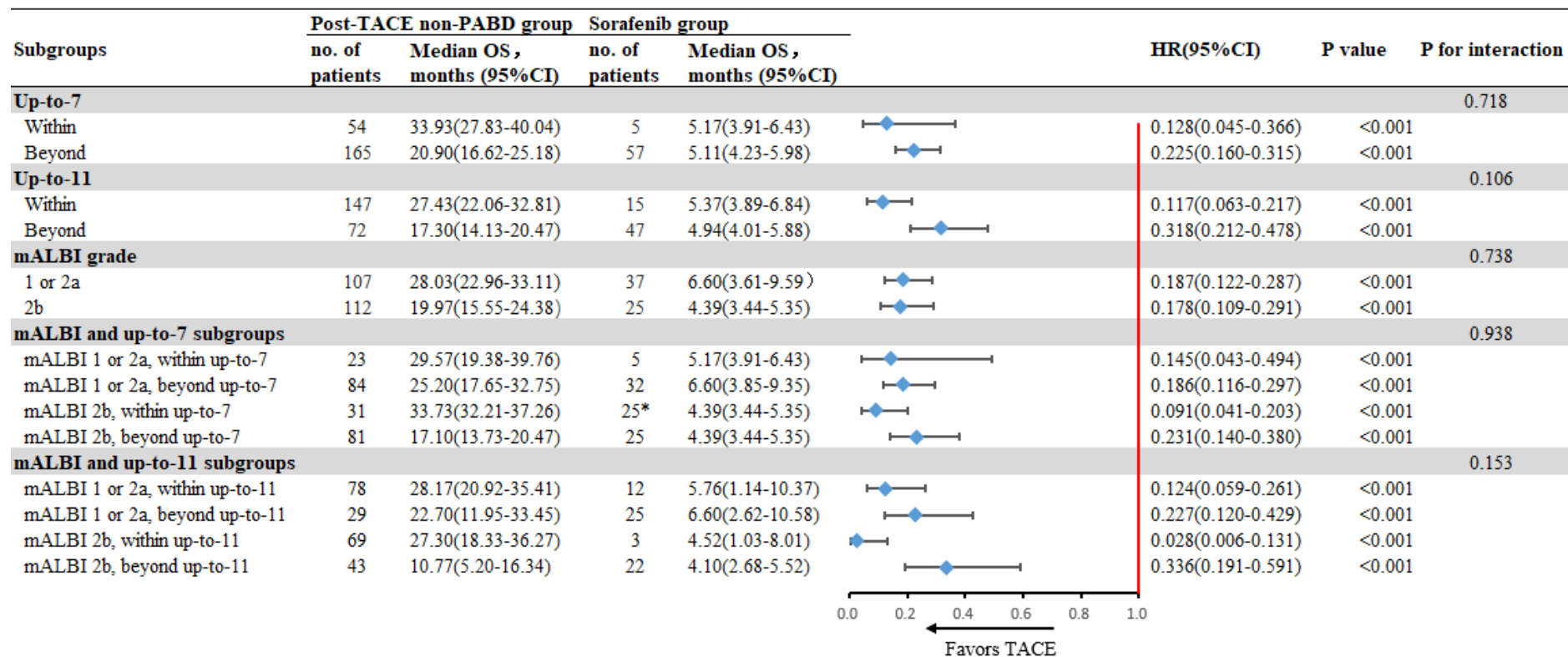
* The overall survival of all patients with mALBI grade 2b receiving sorafenib was used as a control because there were no patients in this subgroup

Supplementary Figure 2. Forest plot of subgroup analysis of overall survival for patients with persistent albumin–bilirubin grade deterioration after the initial transarterial chemoembolisation relative to patients receiving supportive care



Abbreviations: 95% CI = 95% confidence interval; HR = hazard ratio; mALBI grade = modified albumin–bilirubin grade; PABD = persistent albumin–bilirubin grade deterioration; SC = supportive care; TACE = transarterial chemoembolisation

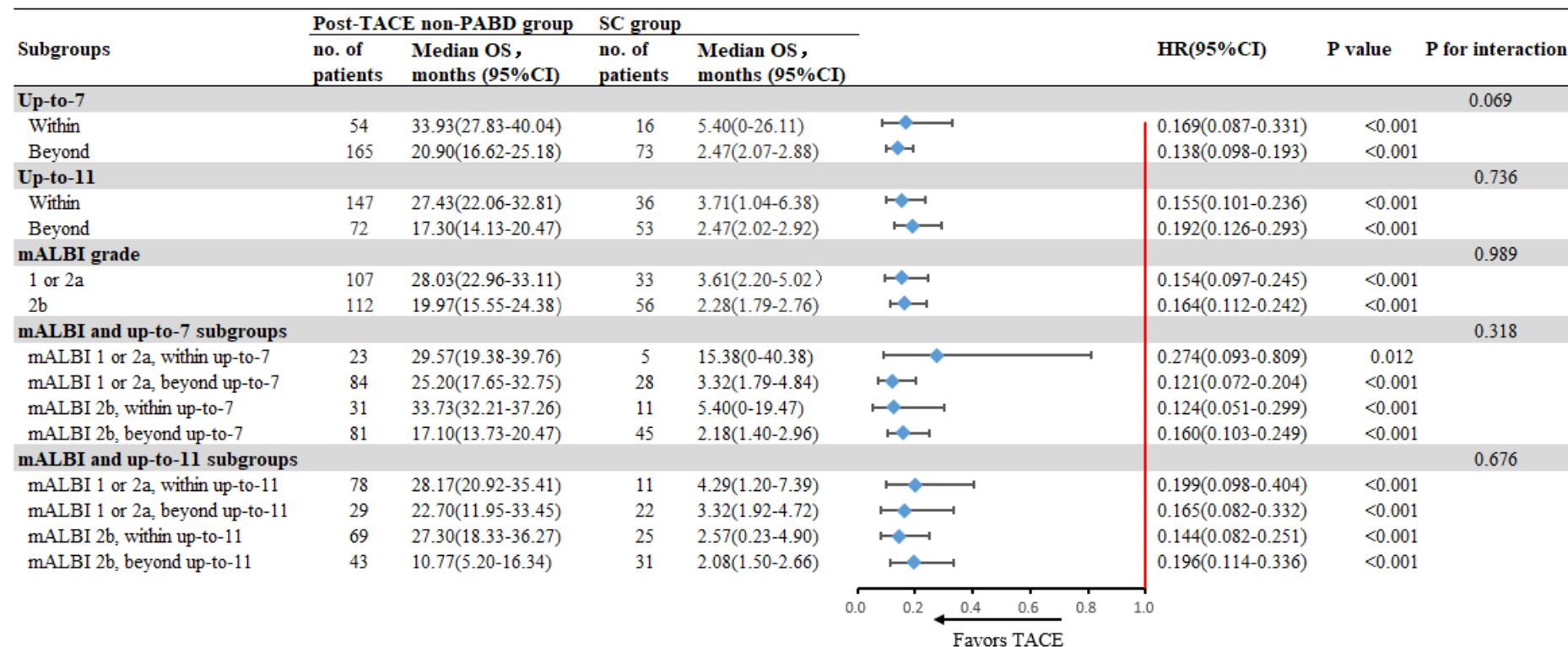
Supplementary Figure 3. Forest plot of subgroup analysis of overall survival for patients in the non-persistent albumin–bilirubin grade deterioration group after the initial transarterial chemoembolisation relative to patients receiving sorafenib



Abbreviations: 95% CI = 95% confidence interval; HR = hazard ratio; mALBI grade = modified albumin–bilirubin grade; TABD = temporary albumin–bilirubin grade deterioration; TACE = transarterial chemoembolisation

* The overall survival of all patients with mALBI grade 2b receiving sorafenib was used as a control because there were no patients in this subgroup

Supplementary Figure 4. Forest plot of subgroup analysis of overall survival for patients in the non-persistent albumin–bilirubin grade deterioration group after the initial transarterial chemoembolisation relative to patients receiving supportive care



Abbreviations: 95% CI = 95% confidence interval; HR = hazard ratio; mALBI grade = modified albumin–bilirubin grade; SC = supportive care; TABD = temporary albumin–bilirubin grade deterioration; TACE = transarterial chemoembolisation